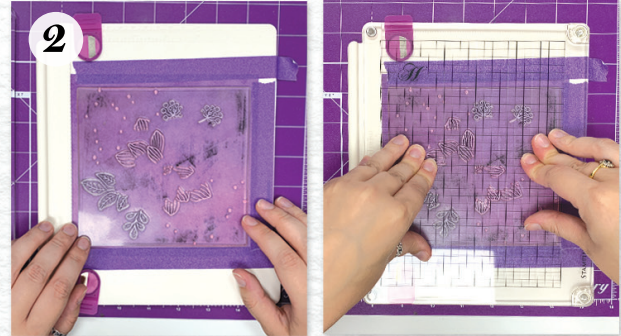


You will need:

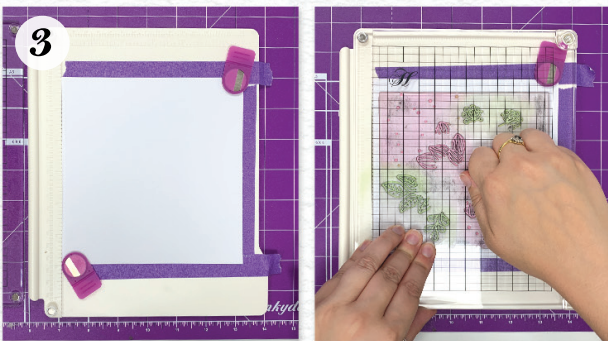
- Pretty Petals Stamp Set - FTLS479
- Stamp 'n' Twist template
- Stamping Press - PCT34
- 6" x 6" Ink Me! Card Block - ECB103
- Prism Ink Pads in various colours



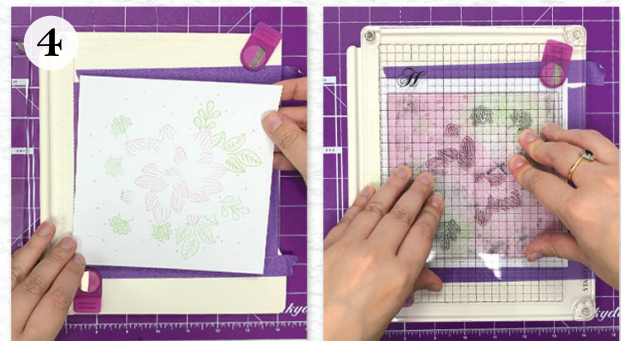
1 Begin by cutting your Stamp 'n' Twist template to a 6" x 6" square and position it on your Stamping Press between 1 and 7 inches. Secure your template in place using Low-Tack Tape.



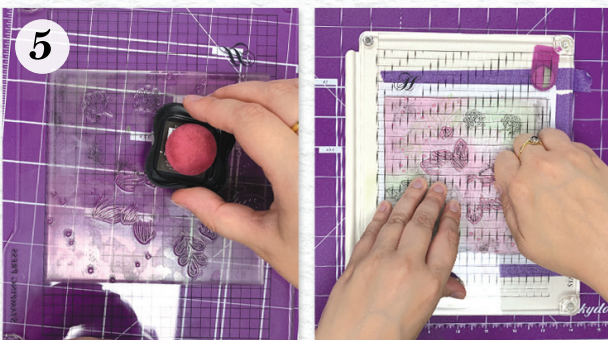
2 Position your stamp face down and line it up with the template to ensure the stamp is in the correct position. When in position, press your clear top plate down to pick your stamp up.



3 Place your 6" x 6" Ink Me! cardstock over your template and secure using the magnets. Ensure these are positioned so not to get in the way of your stamp. Apply your chosen ink(s) and then stamp, pressing down firmly across the whole design.



4 Twist your Ink Me! cardstock 90 degrees and ensure it lines up with the Stamp 'n' Twist template underneath. Secure with the magnets. Do not move your stamp! Reapply ink(s) and stamp again.



5 Repeat step 4 a further two times to complete your stamped design. Use the colouring guide for reference.



- Clean stamp with water, allow to dry then return to backing sheet.
- Store away from direct sunlight and extremes temperatures.

Visit www.youtube.com/clubhunkyorytv for demonstration videos